



KALASH INDUSTRIES

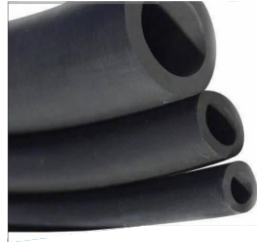
ISO CERTIFIED 9001 : 2015

We are leading manufacturer of :

- Rubber Extrusion Profile
- Rubber Moulded Parts
- Plastic Injection Moulded Parts
- PVC Extrusion Profile



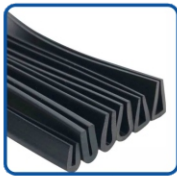
RUBBER EXTUTION



EPDM RUBBER
TUBE SIZES



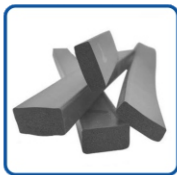
1.	15 × 11 MM	6.	14.5 × 9.2 MM
2.	12.5 × 9 MM	7.	19.5 × 14 MM
3.	13.4 × 9.4 MM	8.	7 × 4 MM
4.	11.5 × 8.5 MM	9.	13.5 × 10 MM
5.	8.4 × 6.3 MM	10.	9 × 7 MM
		11.	5 × 3 MM(Rubber Sponze Pipe)



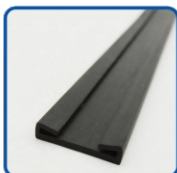
Trim U Type



Sponze Card (3 MM to 25 MM)



Sponze Square Cord



C-Type



Rubber Profile



RUBBER MOULDING PARTS

1.	O Ring		7.65 × 1.78	
2.	O Ring		12 × 1.5	
3.	O Ring		12 × 2	
4.	O Ring		4 × 1.5	
5.	D Ring		18 × 6 × 2	
6.	Washer		18 × 9.8 × 2.8 (504)	
7.	Washer		20.5 × 11 × 2 (507)	
8.	Washer		18.5 × 11 × 2.5 (510)	
9.	Washer		25.9 × 19 × 2.9 (511)	
10.	Washer		24 × 13 × 3.5 (521)	
11.	Washer		23 × 15.5 × 4 (523)	
12.	Washer		21 × 14 × 2 (524)	
13.	Washer		21 × 14 × 3 (525)	
14.	Washer		38 × 2 × 3.5 (526)	

TWO WHEELER MIRROR CAP



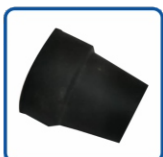
Cap Lock Nut



Stay Cap



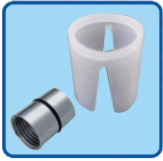
Boot Rubber



Honda Rubber



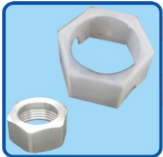
PLASTIC INJECTION MOULDING PARTS



Conical Nut Cover



Plastic Nipple



Hex Nut Cover



Screwin Cap

PVC EXTRUSION PROFILE



- We Make All Rubber Parts & Profile with different Rubber Polymers like EPDM, Natural, Neoprene, Silicon, Nitrile Etc.
- We Make All Plastic Parts with different Plastic Polymers like LD, PP, Nylon, Derlin Etc.

We Make All Profile & Parts as per Customer Requirement.



KALASH INDUSTRIES

ISO CERTIFIED 9001 : 2015

🌐 sales@kalashindustries.com | quality@kalashindustries.com | kalashindustries2022@gmail.com

☎ +91-9953540400, +91-9289886570

📍 Plot No. 134-135, Gali No. 5, Malerna Road, Opp. Beri ka Bagh, Ballabgarh-121004

🌐 www.kalashindustries.com



KALASH INDUSTRIES